



EVENT GUIDE

REGISTRATION INFORMATION

- Registration will be available on-line through Friday October 6 at 11:59 P.M.
- Registration will be available on-site Saturday from 5:00 P.M. - 7:00 P.M.
- Same-day registration is located in the main expo area, on Whittier side of the park from 6:30A.M. to 8:00A.M.
- **Other City Activities:** Heritage Festival begins Saturday after 10:00 A.M.

•

CANCELLATION POLICY

Sale and/or transfer of race entry/ bib is prohibited. All registration fees and ancillary purchases are non-refundable. Participants may be required to show photo ID.

SCHEDULE

DATE	TIME	EVENT	LOCATION
Saturday, October 7	5:00 P.M. - 7:00 P.M.	Exhibitor / Vendor Set-up	1301 W. Whittier Blvd, Montebello CA 90640
Saturday, October 7	5:00 P.M. - 7:00 P.M.	Bib & t-shirt pick up Registration	1301 W. Whittier Blvd, Montebello CA 90640
Sunday, October 8	6:00 A.M. - 8:00 A.M.	Same Day Registration and Bib pick-up	1301 W. Whittier Blvd, Montebello CA 90640
Sunday, October 8	8:00 A.M.	5K & 10K Start	1301 W. Whittier Blvd, Montebello CA 90640

BIB & T-SHIRT PICK - UP DETAILS

Allow Plenty of time to pick up your packet:

T-Shirts Gauranteed to Pre-Registered Participants

If you registered before the event, the t-shirts will be issued to you before the start of the race at pick-up

- **Note:** Base on this year's registrations, there will be plenty of t-shirts for all registered participants. However, late registration t-shirts will be provided after the start if the run.

DO NOT MIX YOUR BIB Bib Assignment Information

REVIEW YOUR BIB

- As with most new events, there are occasions where people decide to exchange bibs, they distribute the bib to the wrong person, etc. .
- Allow plenty of time to pick up your bib and make sure it is yours and not your friends. If you do not wear the bib assigned to you, your times may not be accurate or incorrect.

LATE REGISTRATION

Just remember to make sure you are entering your correct date of birth information when you register. There will be division awards provided to both males and females in each age category.

T-SHIRTS

Will be distributed on Sunday on race day in the Expo area located across from the start/ finish.

BIB ASSIGNMENT

Bib numbers will not be pre-assigned. Participant bibs will be assigned at packet pick-up using dynamic bib assignment. Volunteers will check-in runners and assign the bib number during this time.

PARKING

Allow plenty of time to get to the registration area and pick up your bib & t-shirt. Arrive early and factor in traffic to ensure you make it to the start line on time.

There is plenty of parking in the main area, around the baseball field at 236 George Hensel Drive, Montebello;

Additional parking located at the Montebello Intermediate School Parking lot via eastbound at Vail Avenue.

PARKING | La Canada High School

1 LOCATION

Montebello Intermediate School
1600 West Whittier Blvd, Montebello,
CA 90640

- Staff & Volunteer Parking inside just next to the main expo area. Attendant will let you in,

- **Exhibitors / Vendors:** You can only access the designated parking area by showing the pass provided. The staff at the main entrance will have your name on the list for entry

OVERFLOW PARKING Below at Large Baseball Field

1. At Montebello City Park baseball Field,
236 George Hensel Drive,

PARKING MAP

EVENT OPENS AT 6:00 A.M.



Course Information

STARTING LINE

Runners are encouraged to begin lining up no later than 7:45 A. The race will start on time at 8:00 am.

Line up according to your expected race pace. Faster runners should be positioned at the front of the start chute, while slower runners/walkers/ strollers start on the back. The goal is to have the start flow nice and safely. Remember you are being chip timed.

COURSE DESIGN | HISTORIC ARROYO SECO TRAILS

Participants will cover the road and trails along the historic Hahamongna trailhead. Mostly trails and views of the foothills (see attached course route).

RECOVERY WATER STATIONS |

Water will be available at the halfway mark on the route and at the finish / start. There will be 3 opportunities to drink water on the course.

FIRST AID SUPPORT

We will have a roving first aid team available to cover the main portion of the 5K & 10K. First aid station also available in the main expo area.

FINISH LINE

Finish Line is located near the expo area.

EXPO & CELEBRATION

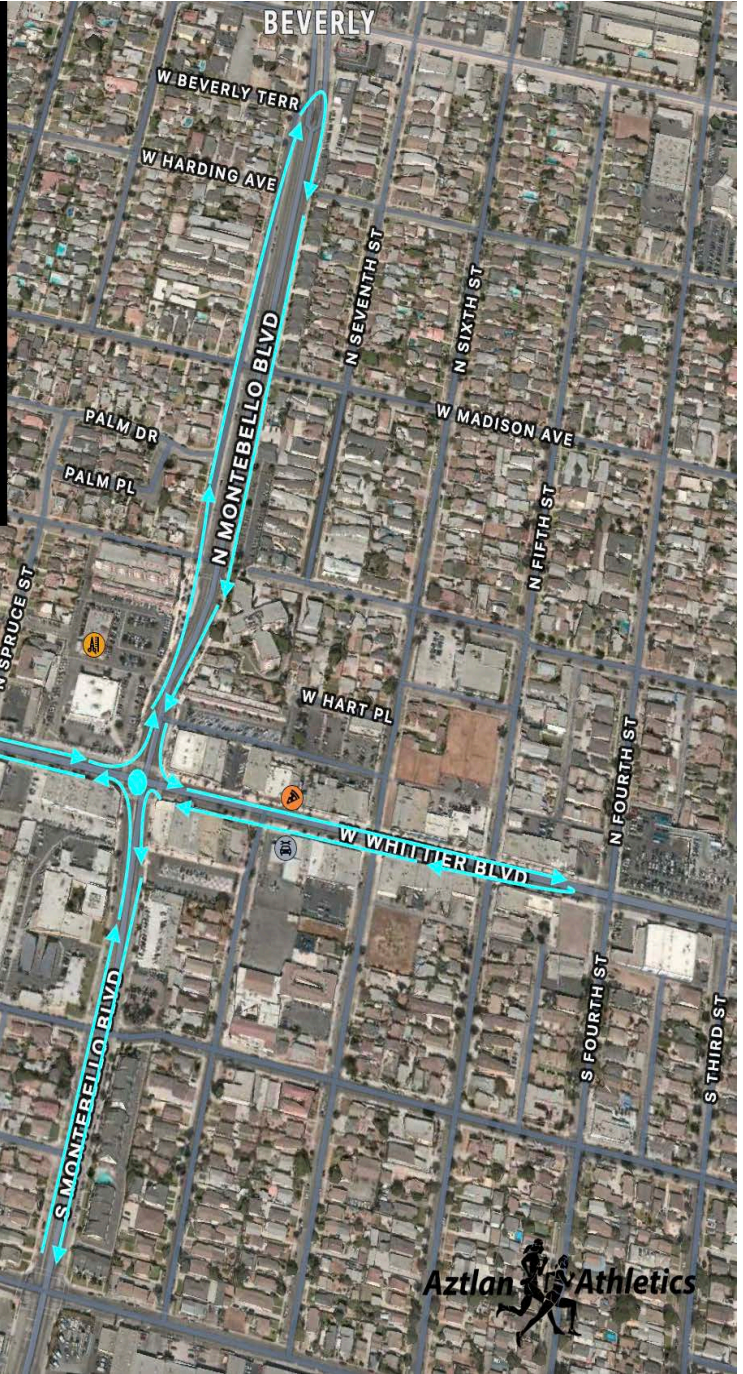
COURSE MAP

5/10K Course Route

Participants will start on Whittier Blvd. on the north side of the street, turn left on Montebello and stay on the west side of the street, then a U turn just before Beverly back down to Olympic on the east side of the street. Make a left turn on Whittier and stay on the north side of the street, then a U-turn 30 feet before Fourth Street and head on the south side of Whittier towards Montebello. Make a left on Montebello and stay on the east side of the street, then make a U turn just before Olympic, back to Whittier and make a left towards the par. Finally participants will make a left on Taylor, then a right on Olympic, and turn right on Park Avenue. Finally, making a right turn to the finish on the South Side of the street.

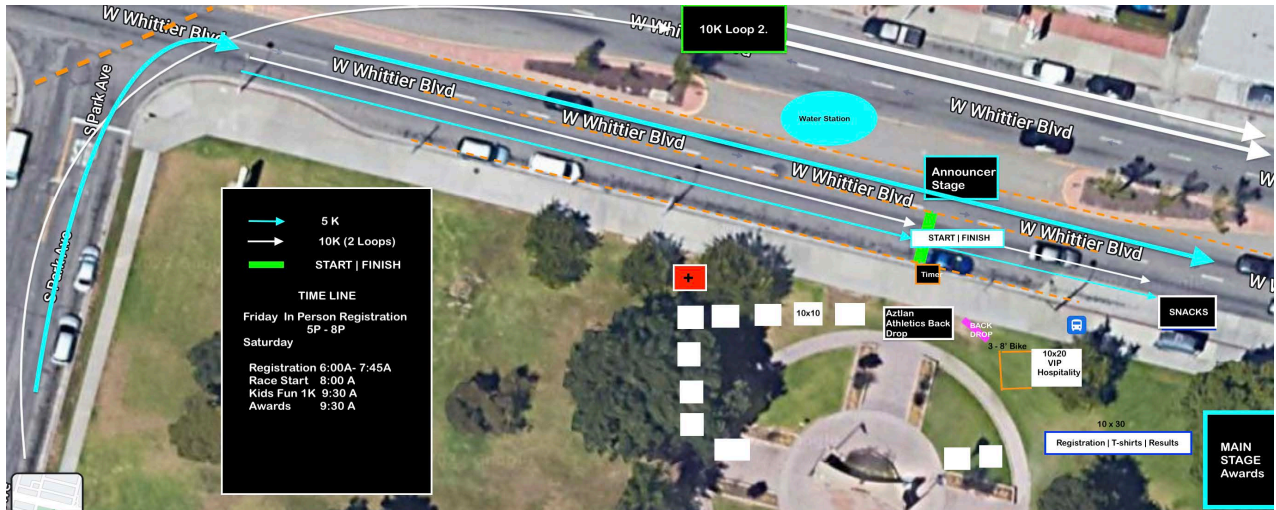
The 10K will cover the course twice or 2 loops. This is a flat and fast course with wide turns.

Water Stations | 4 Water-Drinking Opportunities



FINISH LINE EXPO

The Finish Line Expo is open to all participants and spectators. Join us! located next to the finish / start. Featuring sampling booths, music entertainment and awards ceremony.



PHOTOS

Photos before, during and at the expo will be available on the event website in the photo gallery area 72 hours after the completion of event on Sunday.

COVID 19 SAFETY PROTOCOLS

- Please stay home if you feel sick.
- Per county outdoor guidelines, masks are not required but encouraged.
- Participants needing room for social distancing in corral should plan to start in the back.

AWARDS

- 5K/10K Run
 - Age Division
- Finisher medals to all registered participants

Prize Money

First place overall \$300 | Sponsored by Aztlan Athletics

Performance Bonuses :

FOR THE FIRST RUNNER ONLY UNDER THE FOLLOWING TIMES

MALE

Under 14 minutes 30 seconds \$200

Under 14 minutes \$200

Under 13 minutes and 30 seconds \$500

Under 13 minutes \$750

FEMALE

Under 16 minutes and 30 seconds \$200

Under 16 minutes \$200

Under 15 minutes and 30 seconds \$500

Under 15 minutes \$750

Aztlan Athletics | Sustainable Special Events

Join Aztlan Athletics in their mission-driven events throughout the year. By completing most of the events, you will discover the organizations Aztlan endorses. For more information on how you can leave a legacy in your community by creating a sustainable fundraising event contact us:

info@AztlanAthletics.org | 626-755-8489.

Since 1974 Aztlan Athletics (Aztlan Athletics Congress) has been developing community-based, mission-driven, sustainable properties in Southern California. All of the staff and service contractors reside in the region. Aztlan currently contracts with over 20 recognized non-profit organizations in the region.

EVENT PARTNERS

Aztlan Athletics, LLC - Official Operating Partner

City of Montebello - Host City

City of Montebello, Parks & Recreation

SOCIAL MEDIA

INSTAGRAM

@AztlanAthletics
@RunMontebello

FACEBOOK

facebook/RunMontebello

HASH TAGS

#RunMontebello
#RunAztlanAthletics