



Griffith Park Run

HALF MARATHON & 5K

RUN GUIDE

March 03, 2024

RUN GPR REGISTRATION

- Half Marathon & 5K
 - Registration will be available **on-line** through Saturday March 2 at 11:59 P.M.
 - **Half Marathon Cut-Off Time is 11:30A.M. We may have approval to extend for 30 Minutes.**
 - In-Person Registration will be available at REI Burbank: **Saturday March 2 at: 1900 West Empire Avenue, Saturday from 12:00 P.M. -7:00 P.M.**
 - Same-day registration starts at 6:00A.M. and ends 15 minutes prior to each start.
 - **Elite Invitational** registration is sponsored by Aztlan Athletics, LLC. **All athletes must be cleared by the event director, Jose Luis Zavala, (Jose@AztlanAthletics.org) two weeks prior to event to be eligible. All detailed at www.RunGPR.com**

CANCELLATION POLICY

Sale and/or transfer of race entry/ bib is prohibited. All registration fees and ancillary purchases are non-refundable. All Participants are required to show photo ID.

SCHEDULE | RACE TIME & REGISTRATION

DATE	TIME	EVENT	LOCATION
Saturday, March 2	12:00PM - 7:00 PM	Bib & t-shirt pick up	REI Burbank 1900 West Empire Avenue, Burbank CA 91504
Sunday, March 3	6:00 AM - 7:15 AM	Run GPR Half Marathon	Crystal Springs South-End of Park 4730 Crystal Springs Dr.
Sunday, March 3	6:00 AM - 9:45 AM	Run GPR 5K	Crystal Springs South-End of Park 4730 Crystal Springs Dr.
	7:30 A.M.	Half Marathon Start	Crystal Springs South-End of Park 4730 Crystal Springs Dr.
	10:00 A.M.	5K START	Crystal Springs South-End of Park 4730 Crystal Springs Dr.
	2:00 P.M.	Event Closes	Crystal Springs South-End of Park 4730 Crystal Springs Dr.
	8:00 A.M. to 2:00 P.M.	Food Trucks	Crystal Springs South-End of Park 4730 Crystal Springs Dr.



HALF MARATHON & 5K

SUNDAY MARCH 3, 2024



BIB & T-SHIRT PICK UP

Participants can register, pick up race bib and t-shirt at these times and locations:

SATURDAY MARCH 2

12P.M. - 7:00P.M.

LOCATION

REI Burbank

1900 West Empire Avenue, Burbank CA
91504

- Parking is available for free. Special REI sponsored discounts

SUNDAY MARCH 3

5:30 AM - 7:15 AM | Half Marathon

6:00 AM - 9:45 AM | 5K

LOCATION

Crystal Springs | Main Venue Expo Area

4730 Crystal Springs Drive, LA CA 90027

- Free parking available in the Crystal Springs area.
- Allow plenty of time for picking up your packets at registration. Races will start on time.

ELITE RUNNER REGISTRATION

All elite runners participating in the prize money category must register before event day and satisfy the requirements before being approved. For details on these guidelines contact Jose@AztlanAthletics.org or call 626-755-8489 or visit the event website www.RunGpr.Com

T-SHIRTS

Will be distributed on Saturday & Sunday in the registration area.

BIB ASSIGNMENT

Bib numbers will not be pre-assigned. Participant bibs will be assigned at packet pick-up using dynamic bib assignment. Volunteers will check-in runners and assign the bib number during this time.

EVENT PARKING

Allow plenty of time to get to the registration area and pick up your bib & t-shirt. Arrive early and factor in traffic to ensure you make it to the start line on time.

There is plenty of parking around the Crystal Springs once you enter the Griffith park area. Follow the parking signs that say Run GPR Event Parking. The map on the website and this guide shows the various locations available including overflow parking near the Pony Ride area, Merry Go Round and Ranger Station.

PARKING | CRYSTAL SPRINGS START & FINISH LINE

1 LOCATION

Free parking around the Crystal Springs area. No access allowed in the VIP parking area which is reserved for sponsors & staff. Over 350 parking slots

- Parking staff will be in the entrance area until 7:45 A.M. for assistance.

- **Exhibitors / Vendors:** You can only access the designated parking area by showing the pass provided.

OVERFLOW PARKING MERRY GO ROUND & PONY RIDE

1. **Pony Ride parking is located between Los Feliz and Griffith park freeway exit. Over 400 parking stalls**

2. **Merry Go Round parking is located just passing the Ranger Station. Turn left. Over 300 parking slots.**

PARKING MAP

GATES OPEN AT 5:30AM



**Entrance from Crystal Springs by
Ranger Station | Primary Parking |
Main Venue**

Run GPR Course Information

STARTING LINE

Runners are encouraged to begin lining up for the half marathon no later than 7:20A. The race will start on time at 7:30 am. The 5K race will begin promptly at 10:00 am.

Line up according to your expected race pace. Faster runners should be positioned at the front of the start chute, while slower runners/walkers/ strollers start on the back. The goal is to have the start flow nicely and safely. Remember you are being chip timed.

COURSE DESIGN | HISTORIC GRIFFITH PARK TRAILS

Run GPR half marathon consist of a fast flat start on compact trail for the first 4 miles. Participants will then shift into miles 5 through 7 which covers the Pony Ride and Merry Go Round portion of the trails consisting of rolling hills with spectacular views of the foothills. The final portion of the course passes by travel town, and the zoo. The last 4 miles are fastest portion of the course, which is mostly flat compact trail.

The 5K course is all flat and fast covering the perimeter of the golf course.

WATER STATIONS

Water will be available at all 4 water stations along the route. Electrolytes will be available at every other water station. 5k Participants will have both water and electrolytes at halfway portion of the route.

FIRST AID SUPPORT

We will have a roving first aid team covering the main access points on the half marathon and 5K. First aid station also available at the finish line area.

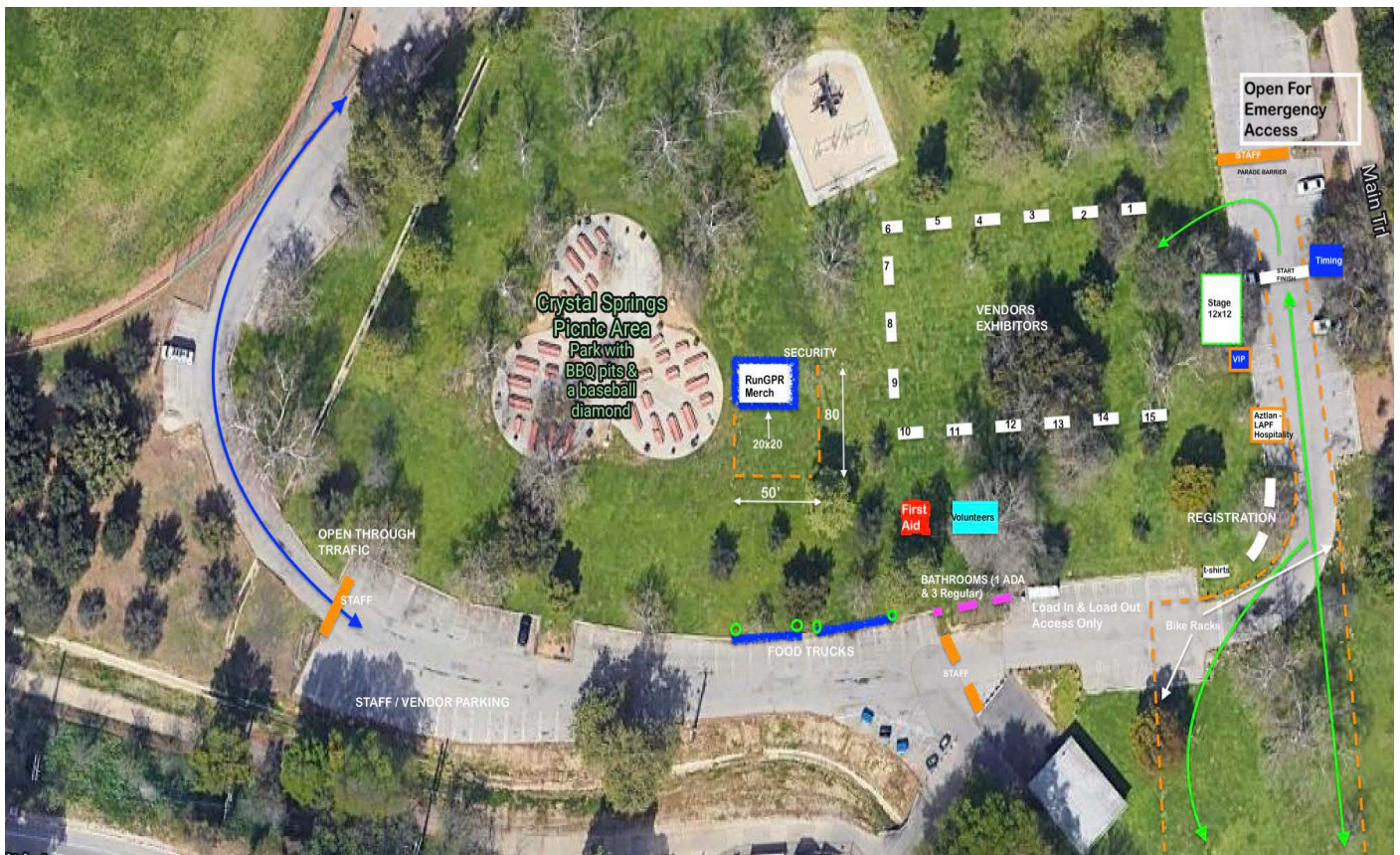
ELITE RUNNER PARTICIPATION & AWARDS | HALF MARATHON ONLY

The half marathon is open to all level of ability, including walkers! Take your time and enjoy the trek of this historic route. Please review the Elite runner participation section on the website. Elite athletes have to be approved by the event director, Jose Luis Zavala, prior to race day. Prize money is sponsored by Aztlan Athletics, LLC and will be mailed once completed W-9 forms are provided.

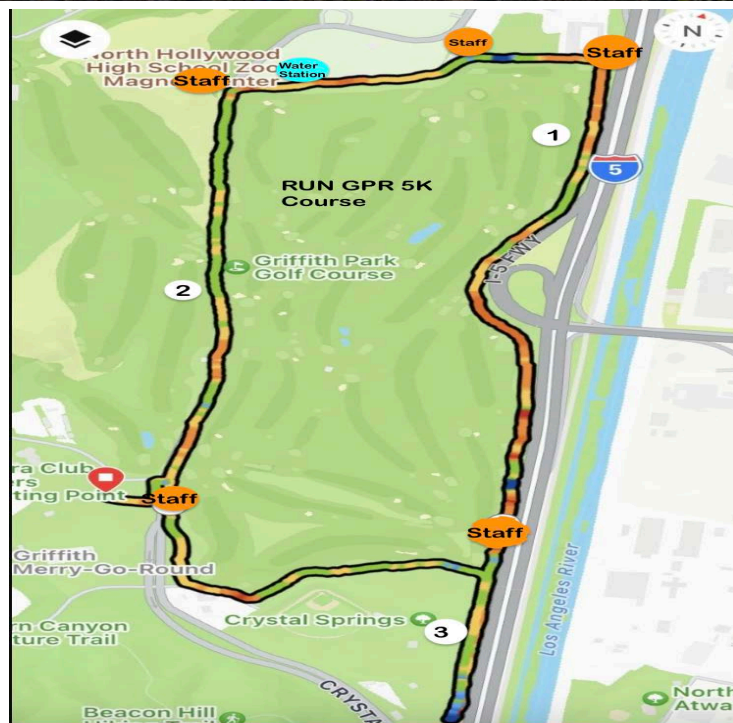
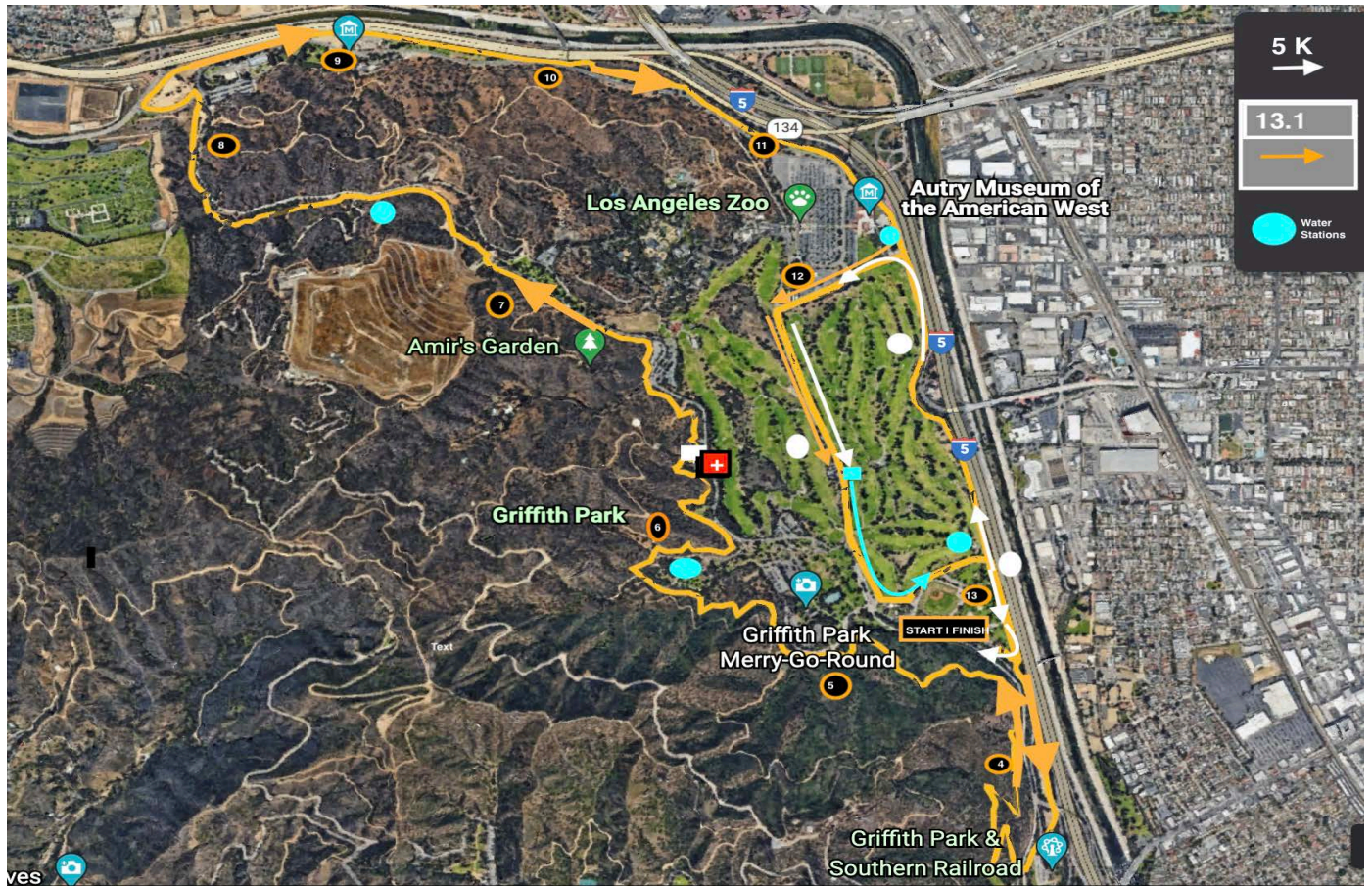
FINISH LINE

Run GPR Finish Line is located north of the Pony Ride trail just south-east on Crystal Springs Road, behind the Ranger Station.

RUN GPR EXPO & CELEBRATION



RUN GPR COURSE MAPS



FINISH LINE EXPO

The Finish Line Expo is open to all participants and spectators. Join us ! located next to the finish / start. Featuring sampling booths, beer garden, food trucks, kids fun zone, music entertainment and awards ceremony.

PHOTOS

Photos before, during and at the expo will be available at RunGPR.Com in the photo gallery area 72 hours after the completion of event on Sunday.

COVID 19 SAFETY PROTOCOLS

- Please stay home if you feel sick.

AWARDS Note: Prize Money for Half Marathon Only

- 5K Run

- Age Division

- Half Marathon

- Top 3 Overall

- Age Division

- Masters 40 Plus

- \$300

- \$200

- \$100

- Open

- \$750

- \$500

- \$300

Cover The Distance, Support The Cause

Los Angeles Parks Foundation have other amazing fundraising events in addition to Run GPR. Visit their website at www.LAParksFoundation.Org throughout the year for updates.

Proceeds from Run GPR go directly to support LA Parks Foundation's mission.

Aztlan Athletics | Sustainable Special Events

Join Aztlan Athletics in their mission-driven events throughout the year. By completing most of the events, you will discover the organizations we endorse. For more information on how you can leave a legacy in your community by creating a sustainable fundraising event contact us: info@AztlanAthletics.org | 626-755-8489.

Since 1974 Aztlan Athletics (Aztlan Athletics Congress) has been developing community-based, mission-driven, sustainable properties in Southern California. All of the staff and service contractors reside in the region. We know the community and are honored to be partnering with the Los Angeles Parks Foundation since 2018. Aztlan currently contracts with over 20 recognized non-profit organizations in the region. For more information visit AztlanAthletics.org

PARTNERS

Aztlan Athletics, LLC - Official Operating Partner

City of Los Angeles, Department of Recreation and Parks
Host

Los Angeles Parks Foundation - Exclusive Benefiting Partner



SOCIAL MEDIA

INSTAGRAM

@AztlanAthletics
@LAParksFoundation

FACEBOOK

facebook/LAParksfoundation

HASHTAGS

#RunGPR
#RunAztlanAthletics