

SOUTH PASADENA TIGER RUN 5K/10K RUN/WALK



EVENT GUIDE | RUNNERS, VENDORS

REGISTRATION INFORMATION

- Registration will be available on-line through Friday December 1 at 5 P.M.
- Registration will be available on-site Friday from 4:00 P.M. - 7:00 P.M.
- Same-day registration is located in the main expo area starts 6:00 A.M. - 7:40A.M.

•

CANCELLATION POLICY

Sale and/or transfer of race entry/ bib is prohibited. All registration fees and ancillary purchases are non-refundable. Participants may be required to shows photo ID.

SCHEDULE

DATE	TIME	EVENT	LOCATION
Friday December 1	4:00 P M - 7:00 P M	In-Person Bib & T-Shirt Pick Up	South Pasadena High School Basketball Court Area 1527 Diamond Avenue, South Pasadena CA 91030
Saturday, December 2	6:00 A M - 7:40 A M	Same Day Bib & t-shirt pick up	South Pasadena High School Basketball Court Area 1527 Diamond Avenue, South Pasadena CA 91030
Saturday, December 3	8:00 A M	5K & 10K Race Start	South Pasadena, Diamond & Rollin
Saturday, December	9:30 A.M. .	Kids Fun Run Start	South Pasadena High School Track
Awards	9:45 A.M	Awards	South Pasadena High School Basketball Court Area

BIB & T-SHIRT PICK - UP DETAILS

Allow Plenty of time to pick up your packet:

T-Shirts Gauranteed to Pre-Registered Participants

If you registered before the event, the t-shirts will be issued to you before the start of the race at pick-up

- **Note:** Based on this year's registrations, there will be plenty of t-shirts for all registered participants. However, late registration t-shirts will be provided after the start if the run.

DO NOT MIX YOUR BIB Bib Assignment Information

REVIEW YOUR BIB

- As with most new events, there are occasions where people decide to exchange bibs, they distribute the bib to the wrong person, etc. .
- Allow plenty of time to pick up your bib and make sure it is yours and not your friends. If you do not wear the bib assigned to you, your times may not be accurate or incorrect.

LATE REGISTRATION

Just remember to make sure you are entering your correct date of birth information when you register. There will be division awards provided to both males and females in each age category.

T-SHIRTS

Will be distributed on Friday and Saturday on race day in the expo area located across from the start/finish in the basketball court area. Late registrants will need to wait to get their t-shirts after the start of the race.

BIB ASSIGNMENT

Bib numbers will not be pre-assigned. Participant bibs will be assigned at packet pick-up using dynamic bib assignment. Volunteers will check-in runners and assign the bib number during this time.

PARKING

Allow plenty of time to get to the registration area and pick up your bib & t-shirt. Arrive early and factor in traffic to ensure you make it to the start line on time.

There is plenty of parking around the Bell Gardens Veterans Park. Limited parking inside the school next to the park so arrive early.

GENERAL PARKING

1 LOCATION

Free parking located around the high school.

South Pasadena Metro Station located 600 yards from the high school.

- Volunteer drop off on Diamond & Monterey Road, just outside the expo area in the basketball court area.
- **Exhibitors / Vendors:** You can only access the designated parking area by showing the pass provided or being checking in. The staff at the main entrance from Monterey Road & Diamond will have your name on the list for entry. Your can temporarily park in drop off next to the expo area.

South Pasadena High School



EXHIBITOR VENDOR STAFF PARKING MAP

EVENT OPENS AT 6:00 A.M.

Course Information

STARTING LINE

Runners are encouraged to begin lining up no later than 7:45 A. Both 5K & 10K will start on time at 8:00 am.

Line up according to your expected race pace. Faster runners should be positioned at the front of the start chute, while slower runners/walkers/ strollers start on the back. The goal is to have the start flow nice and safely. Remember you are being chip timed.

COURSE DESIGN |

5K is a flat course all on newly paved public streets. Water station at the half way mark on Milan. 10K portion of the course is rolling hills with 2 water stations.

RECOVERY WATER STATIONS |

Water will be available at the halfway mark on the route and at the finish / start. Electrolytes at the finish line.

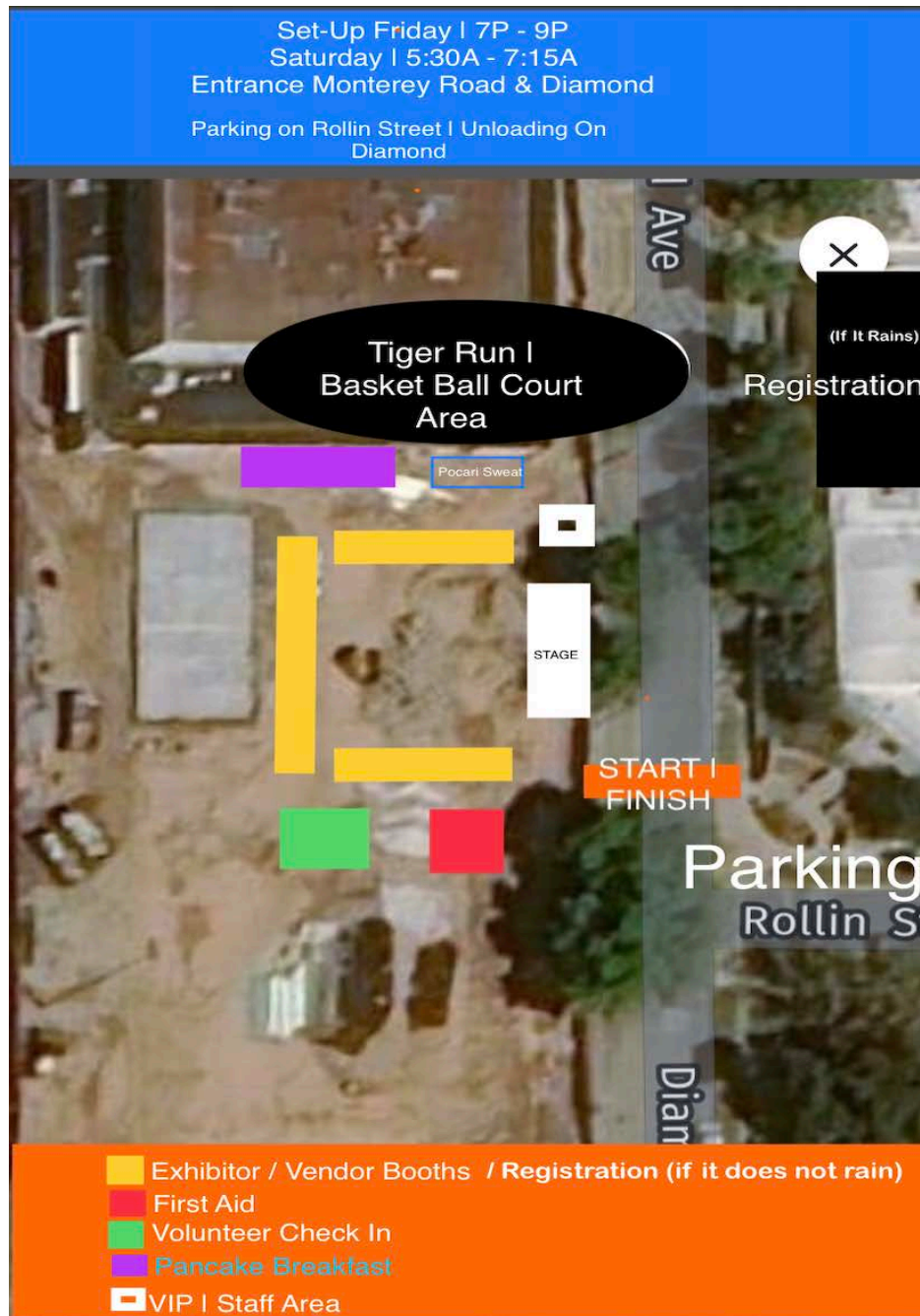
FIRST AID SUPPORT

We will have a roving first aid team available to cover the main portion of the 5K & 10K. First aid station also available in the main expo area.

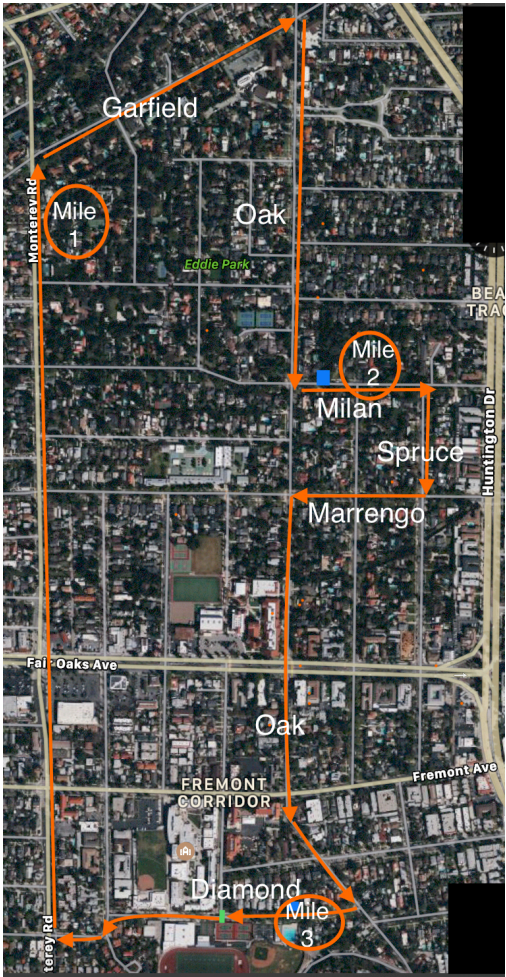
FINISH LINE

Finish Line is located near the expo area.

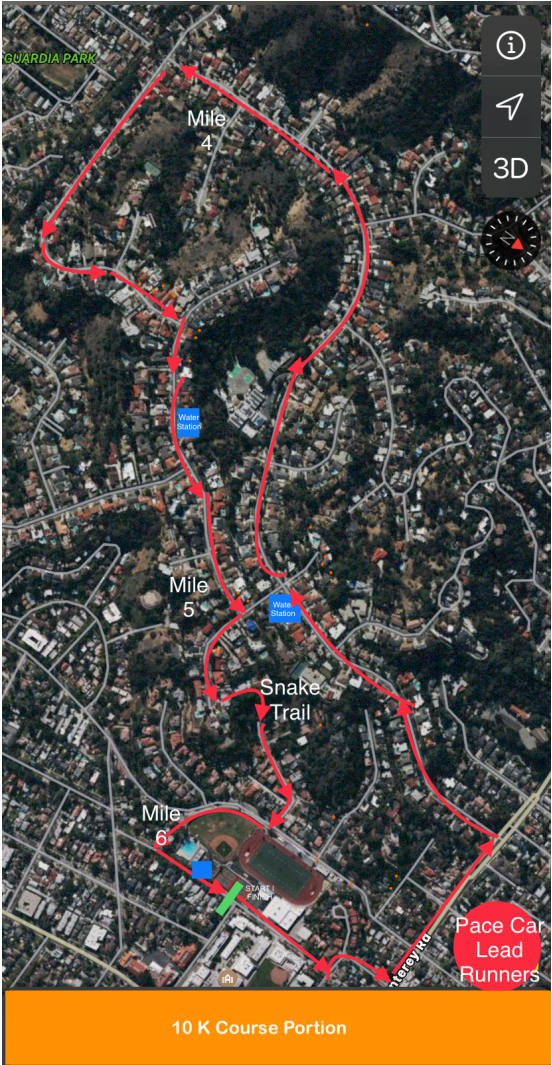
EXPO & CELEBRATION



COURSE MAP



← 5K Course
Water Stations
START / FINISH



FINISH LINE EXPO

The Finish Line Expo is open to all participants and spectators. Join us ! located next to the finish / start. Featuring sampling booths, music entertainment and awards ceremony.

PHOTOS

Photos before, during and at the expo will be available on the event websote in the photo gallery area 72 hours after the completion of event on Sunday.

-

AWARDS

- 5K & 10K Run

- Top 3 in each Age Division

EVENT PARTNERS

Aztlan Athletics, LLC - Operating Partner

City of South Pasadena - Host, Co-Sponsor

South Pasadena Tiger Booster Club- Benefiting Partner

SOCIAL MEDIA

INSTAGRAM

@AztlanAthletics
@TigerRun
@SouthPasadenaTigerBoosterClub

FACEBOOK

facebook/TigerRun

HASH TAGS

#RunAztlanAthletic
#TigerRun
#SouthPasadena