

OHANA HOLIDAY

5K Run/Walk & Toy Drive



COMMUNITY BASED MARKETING & SPONSORSHIP

We welcome mission driven companies to promote their services and products with our diverse client portfolio of run/walk/bike and wellness expos throughout the year. Engage your product to over 240,000 participants yearly. To view all available events, visit our main portal at AzatlanAthletics.org

SPONSORSHIP LEVEL	PRESENTING	PLATINUM	DIAMOND	GOLD
Contribution Amount	\$10,000	\$7,500	\$5,000	\$3,500
Official Start/Finish Banners	✓			
Corporate Banners on Race Course	✓			
Opening Ceremony Speaking Opportunity	✓	✓		
Logo & Signage at Mile Markers	✓	✓		
Year-Long Recognition on Race Sponsor Page	✓	✓		
Name/Logo on Race Bib	✓	✓	✓	
Name/Logo Printed on Registration Form	✓	✓	✓	
Name/Logo on Swag Bag	✓	✓	✓	
Main Stage Logo	✓	✓	✓	✓
Live PA Announcement (5 per event)	✓	✓	✓	✓
Social Media Mentions	✓	✓	✓	✓
Entertainment Stage Signage	✓	✓	✓	✓
Complimentary Booth	✓	✓	✓	✓
Complimentary Race Entries	✓ (50)	✓ (25)	✓ (15)	✓ (5)
Inclusion in Press Release & Media Alerts	✓	✓	✓	✓
Name/Logo on Race Participant Pages	✓	✓	✓	✓
Name/Logo Printed on Race Posters	✓	✓	✓	✓
Name/Logo on T-Shirt	✓	✓	✓	✓

ADDITIONAL SPONSORSHIP OPPORTUNITIES

- WATER STATION SPONSOR or RACE BIB - \$750 for one station
- EXHIBITOR BOOTH - \$350
- EVENT SHIRT SLEEVE - \$1,500 per event
- WHOLE HEALTH PAVILION - \$3,000
- VENDOR BOOTH - \$350 (contact sponsorship manager for more details)

IN-KIND SPONSORSHIPS

By helping us underwrite race production costs, your in-kind contribution ensures that we can maximize proceeds that are endorsed by our foundation.

- Photography
- Prizes for Race Teams & Race Fundraisers
- Runner Gifts
- Wellness Expo Decorations
- Food and Beverage
- Event-related Expo Activities

OHANA HOLIDAY

5K Run/Walk & Toy Drive



COMMUNITY BASED
MARKETING & SPONSORSHIP
BUSINESS INFORMATION CARD



Business name or how you would like to be listed: _____

Contact Name: _____

Phone #: _____

Fax #: _____

Address: _____

City: _____

State: _____ **Zip Code:** _____

Email: _____

CONTACT

Jose L Zavala
Phone: 626-755-8489
Email: Jose@AztlanAthletics.org
Web: AztlanAthletics.org

SPONSORSHIP LEVEL

Presenting \$ _____ **Platinum** \$ _____ **Diamond** \$ _____ **Gold** \$ _____

Exhibitor \$ _____ **Water Station** \$ _____ **Vendor Booth** \$ _____

T-Shirt \$ _____ **Whole Health Pavilion** \$ _____ **In-Kind Donation Type** _____

NOTE: Your company logo must be sent no later than 2 weeks prior to event in order to be included on the acknowledgment print media, commemorative t-shirt, etc. We will produce print media and distribute to the community starting 16 weeks before event date, primarily installing posters and including logos in event swag. Please refer to logo file guidelines on attached file **logo_guidelines.pdf** and send your logo to info@aztlanathletics.org.



OHANA HOLIDAY

5K Run/Walk & Toy Drive



FILE GUIDELINES FOR SPONSOR LOGO

1 full color logo (if applicable)

large jpg or png 150-300 dpi, at least 18in

OR

raw vector file (Adobe Illustrator, EPS, or SVG)

AND

1 single color logo (required)

large jpg or png 150-300 dpi, at least 18in

OR

raw vector file (Adobe Illustrator, EPS, or SVG)

If you do not have a logo and wish to sponsor, we will include your name typed on print media, shirt, etc.

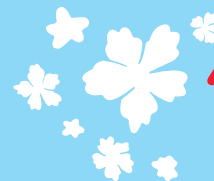
FOR QUESTIONS, CONTACT:

Visual Designer: Roxy

Phone: 626-755-8489

Email: Roxy@AztlanEvents.com

NOTE: Your company logo must be sent no later than 2 weeks prior to event in order to be included on the acknowledgment print media, commemorative t-shirt, etc. We will produce print media and distribute to the community starting 16 weeks before event date, primarily installing posters and including logos in event swag. Please refer to logo file guidelines on this page and send your logo to info@aztlanathletics.org.



THANK YOU